

PURE OFFICES



HIGH QUALITY SERVICED OFFICES

GROW YOUR BUSINESS AT PURE OFFICES LEEDS THORPE PARK

Pure Offices Leeds offers the perfect environment to grow your business within a vibrant community of like-minded professionals. We believe that our light, bright and contemporary offices combined with fast broadband, meeting rooms and flexible, monthly contracts are the ideal solution for the demands of modern businesses.

OFFICE FEATURES

- ✓ Great location on Thorpe Park
- ✓ Easy + immediate move in
- ✓ On-site parking & 24/7 Access
- ✓ On-site team
- ✓ Contemporary interior design
Connected for plug & play internet
- ✓ Immediate access to M1 J46



CALL US NOW **0113 397 0300**

Email: iconleeds@pureoffices.co.uk
Address: Pure Offices, 4100 Park Approach,
Thorpe Park, Leeds, LS15 8GB
Website: pureoffices.co.uk/leeds-thorpe-park



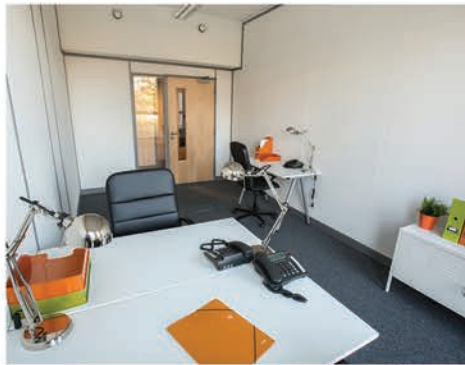
WHY CHOOSE PURE?

SMART - AFFORDABLE - FLEXIBLE

Our contemporary offices come with fast broadband and telephone lines, all in place for when you move in. The offices are priced on the space you take rather than the workstations required and our simple, clear, monthly contracts provide the flexibility needed for modern businesses. Our team takes care of the building allowing you to focus on growing your business.

OFFICE BENEFITS

- ✓ Clear monthly contracts
- ✓ Simple transparent pricing
- ✓ Phone line + number included
- ✓ Fast + unlimited broadband
- ✓ No hidden extras



Don't just take our word for it...

"When we walked into Pure Offices, we knew it was for us.

The offices were immaculate, modern and contemporary and moving in was straight forward.

The excellent facilities are taken care of by the centre manager meaning we can focus on our business.

The fact that high speed broadband and a phone are included in the rent is a real selling point. We love Pure Offices!"

– Silverball PR

CALL US NOW **0113 397 0300**

Email: iconleeds@pureoffices.co.uk

Address: Pure Offices, 4100 Park Approach,
Thorpe Park, Leeds, LS15 8GB

Website: pureoffices.co.uk/leeds-thorpe-park